

Using TestDPC to test and demonstrate Zebra Enterprise Browser and Enterprise Keyboard Managed Configurations

Ian Hatton

Zebra Technologies EMEA

May 22

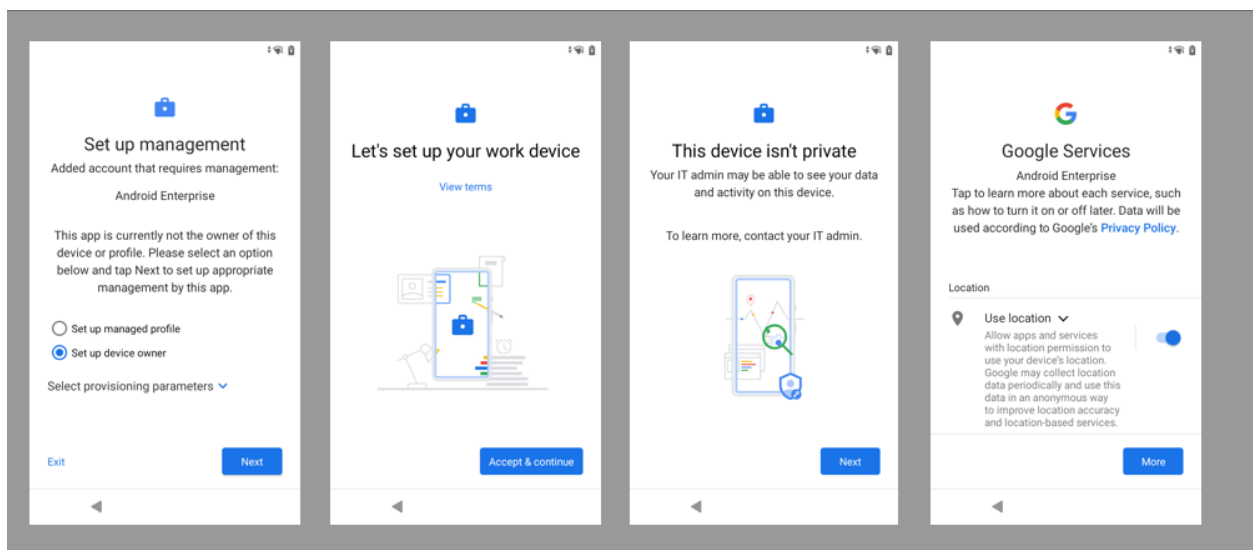
Overview

Google TestDPC (<https://play.google.com/store/apps/details?id=com.afwsamples.testdpc>) is a sample app which when installed as DO (Device Owner) will support manual editing of Managed Configurations published by any installed apps . Source code for this app is publicly available on Github (<https://github.com/googlesamples/android-testdpc>).

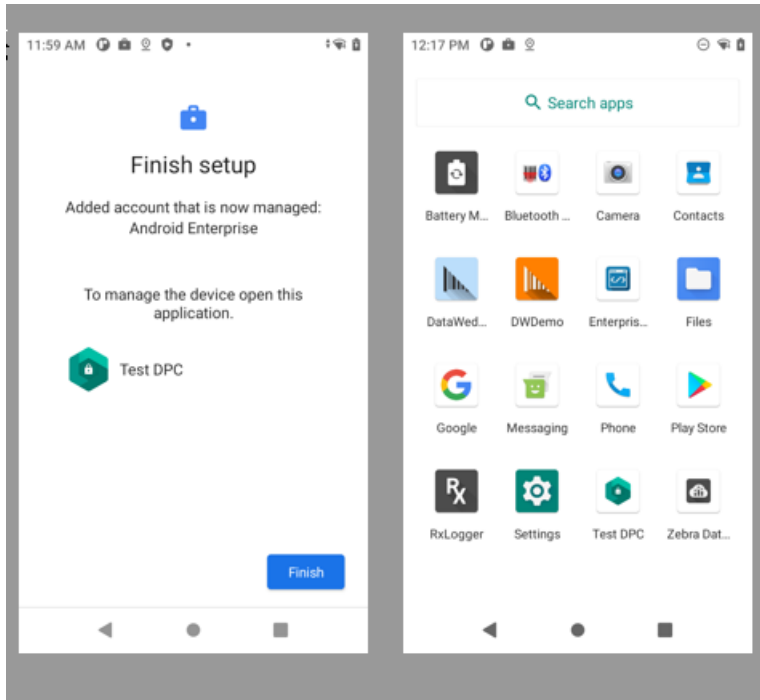
Using TestDPC will allow test and demonstration of Managed Configurations without using an EMM client/server solution such as SOTI i.e. it provides a completely offline and free of charge method of changing these configurations.

Usage

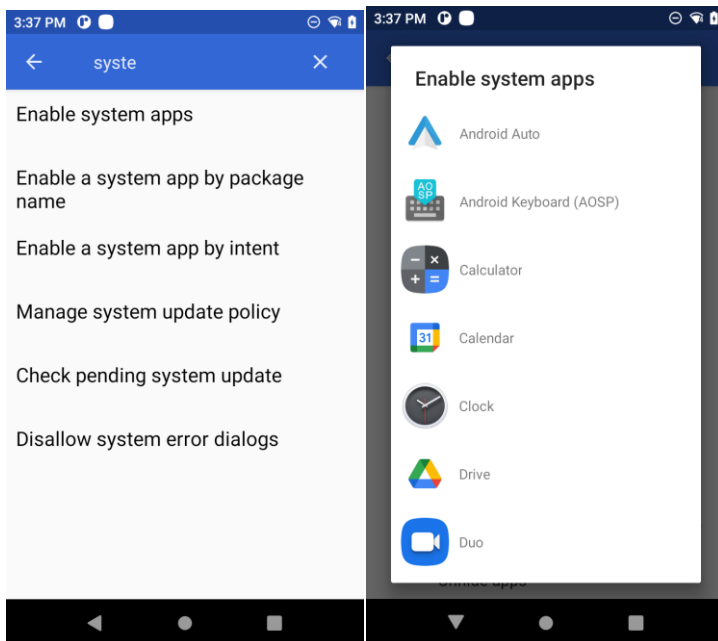
1. Installation as Device Owner is automated if installed via `afw#testdpc` entered as the username at the Sign in screen after a cleanboot . The only pre-requisite for using this method is a device running Oreo or later and having a pre-configured internet connection . After entering the DPC identifier , the TestDPC client will be downloaded and installed and you will be prompted for manual confirmation of a number of steps :



- Note that most system apps are disabled by default and need to be re-enabled from TestDPC in order to support Workstation Connect operation and StageNow profiles

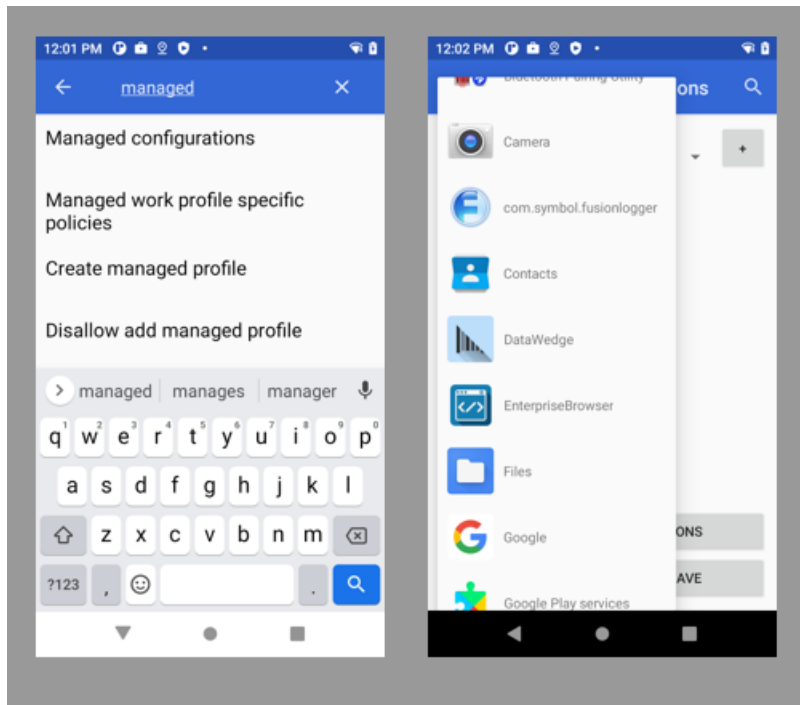


- Search for system in TestDPC and select Enable system apps



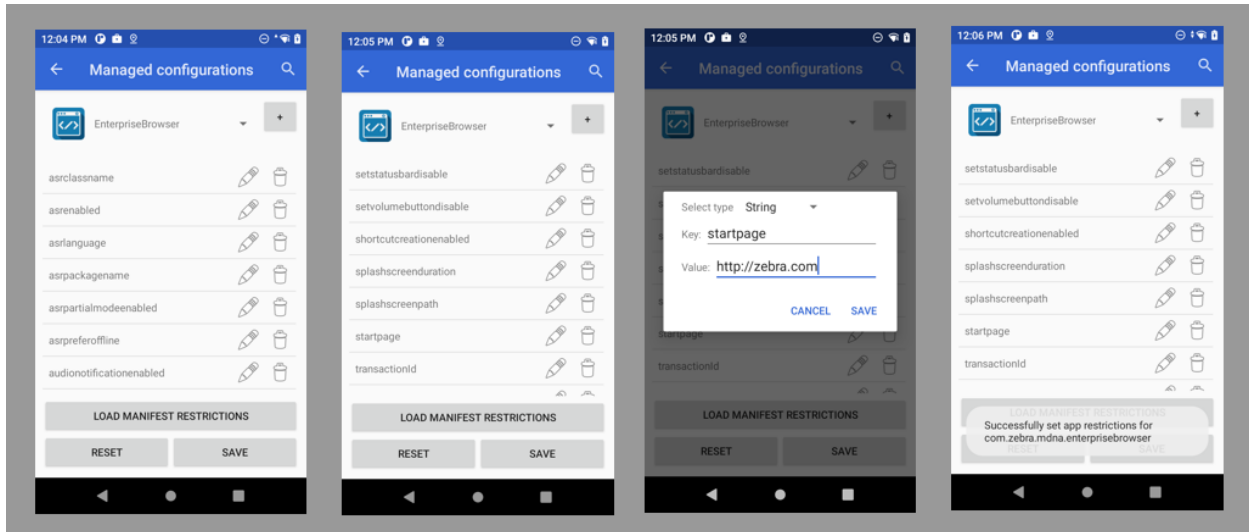
- Press an app name in order to re-enable e.g.
- DisplayLink Desktop (required for Workstation Connect)

- StageNow (required for any apps using EMDK to process XML)
 - Chrome (required for any web-based apps)
3. In order to edit a specific applications Managed Configuration, search for 'managed configurations' , select it and then select the required app from the list of preinstalled apps.
- After selecting app to configure, press Load Manifest Restrictions in order to load the editable profile for that specific app:

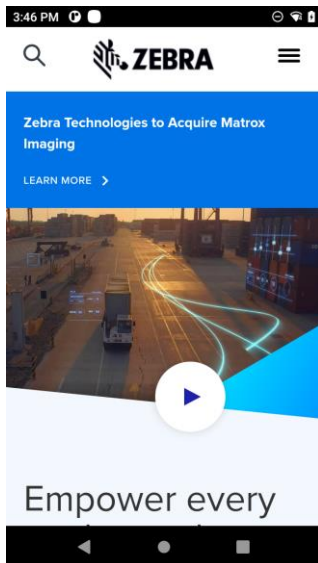


Enterprise Browser Configuration

- Use Enterprise Browser v3.3 or later in order to have support for Managed Configs (otherwise no variables will appear after the Load button is pressed)
- Select Enterprise Browser in the Managed Configuration app list and press 'Load Manifest Restrictions' to access available parameters

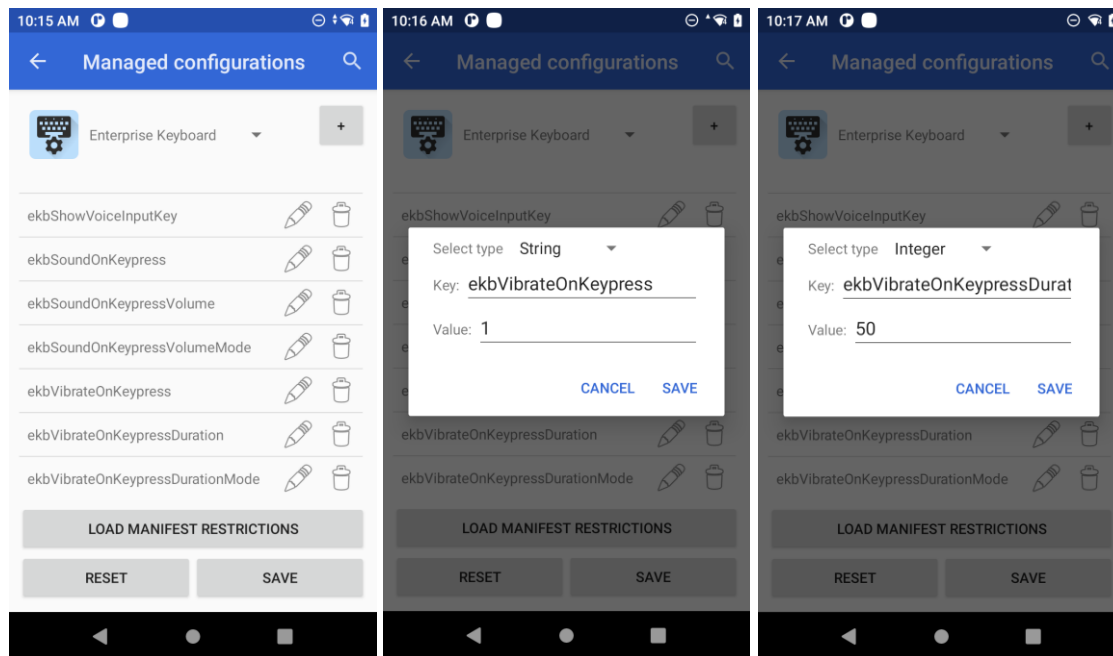


- Scroll down the list to select 'startpage' and enter a new starting URL e.g. <http://zebra.com>
- Press Save button on each screen until the toast message appears briefly to confirm that app restrictions have been set
- Run EB and check that the new start page is effective . Note that any subsequent configuration changes made in TestDPC will require EB to be stopped and restarted in order to see the changes in effect.



Enterprise Keyboard Configuration

- Use Enterprise Keyboard v4.0 or later in order to have support for Managed Configs (otherwise no variables will appear after the Load button is pressed)



- Scroll down the list to select 'ekbVibrateOnKeypress' and enter 1 to enable
- Select 'ekbVibrateOnKeypressDuration' and enter a duration e.g. 50 will vibrate for 50mS
- Press Save button on each screen until the toast message appears briefly to confirm that app restrictions have been set
- Pop up EKB and check that the vibrate feedback occurs on each keypress